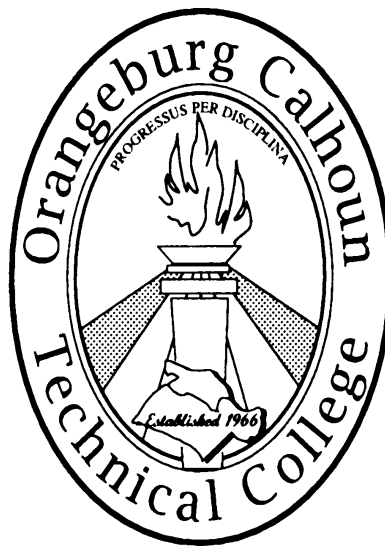




Orangeburg-Calhoun Technical College



Fact Book 2018

3250 St. Matthews Road, Orangeburg, SC 29118

(803) 536-0311 1 800-813-6519

Institutional Effectiveness

www.octech.edu

January 23, 2019

PREFACE

The 2018 Fact Book is published to provide relevant facts and figures about Orangeburg-Calhoun Technical College's enrollment, financial aid programs, and academic curriculums. Information concerning the College's faculty and staff, the Learning Resource Center, financial data, the OCtech Foundation and continuing education programs are also included.

Information for this publication was gathered from College records and reports, the State Board for Technical and Comprehensive Education, and the South Carolina Commission on Higher Education.

College personnel participated in the data gathering effort, and the data was compiled by the staff of the Office of Planning and Development.

Reader comments, suggestions and contributions for future editions are welcomed. Please share your ideas for making this document a more useful tool.

Cleveland Wilson, Jr. Director of IE, IR and Academic Support

Orangeburg-Calhoun Technical College
3250 St. Matthews Road
Orangeburg, SC 29118-8299
(803) 536-0311 (Telephone)
(800) 813-6519 (Toll Free)
(803) 535-1388 (Fax)
www.octech.edu

GENERAL INFORMATION

LOCATION

Orangeburg-Calhoun Technical College maintains 250,000 square feet of instructional and support space on 100 acres in the heart of the service area. The 18-building campus complex is located along a retail, health care, and industrial growth corridor on Interstate 26/US Highway 601, adjacent to the Regional Medical Center and the Carolina Regional Business Park – a setting that offers innovative partnership opportunities with employers.

GOVERNANCE

South Carolina has an integrated system of higher education featuring four types of institutions: teaching universities, research universities, independent colleges, and technical colleges. These institutions are overseen by the South Carolina Commission on Higher Education.

The South Carolina Technical College System is composed of 16 technical colleges. Each college serves a specific geographical area of the state. South Carolina's technical colleges range in size from those located in metropolitan areas with annualized unduplicated enrollments of over 24,000 curriculum students to smaller technical colleges located in more rural areas with enrollments of approximately 1,000 curriculum students. The State Board for Technical and Comprehensive Education is responsible for the state-level development, implementation and coordination of postsecondary occupational and technical training and education for these sixteen technical colleges.

Section 59-53-52 of the Code establishes an Area Commission for each of South Carolina's technical colleges. Each Area Commission has responsibilities for college oversight and management. Orangeburg-Calhoun Technical College's Commission is composed of seven individuals, five from Orangeburg County and two from Calhoun County.

ACCREDITATION

Orangeburg-Calhoun Technical College is accredited by the Commission on Colleges of the Southern Association of Colleges and Schools (SACS) to award Associate in Arts, Associate in Science and Associate in Applied Science degrees. In addition, the Paralegal, Engineering Technology, Business and Computer Technology, Automotive Technology, Associate Degree Nursing, Practical Nursing, Medical Assisting, Respiratory Technology, Radiological Technology, and Physical Therapy Assistant programs are eligible for and accredited by national organizations. The College is committed to seeking accreditation for other programs as they become eligible.

MISSION

The mission of OCtech is to provide relevant training and education in a flexible environment that promotes success and self-reliance for students, and fosters economic development for the region (Last Revised: March 18, 2014).

Orangeburg-Calhoun Technical College is an associate degree-awarding two-year public institution. As an open admissions institution, we serve students with diverse backgrounds and ability levels from a primarily rural region, enrolling approximately 4,000 – 4,600 credit students and 2,500 non-credit students annually. Orangeburg-Calhoun Technical College values the quality and effectiveness of our programs, promoting ethical standards in all aspects of the College's operation. We seek success of each student in an environment that provides opportunity for lifelong learning in a complex, global society.

The College serves our community and our students by meeting the community's need for a literate and technically-competent workforce via the following goals:

1. Deliver student centered programs and services that maximize intellectual and economic growth.
2. Align enrollment management processes that promote growth and improve our ability to meet the needs of employers and prepare students for transfer.
3. Create an organizational environment that is effective, efficient, and committed to future growth.

ORANGEBURG-CALHOUN TECHNICAL COLLEGE AREA COMMISSION

The OCtech Area Commission is composed of seven members, five from Orangeburg County and two from Calhoun County. Commission members are appointed by the Governor upon recommendation of the legislative delegation of each county. Members serve four-year terms and may be reappointed. The Commission meets regularly at least eight (8) times per year on the third Tuesday afternoon of the month. Meetings are advertised in the local newspaper.

Representing Orangeburg County:

John F. Shuler, Chair

Leroy Morant

Jacqueline S. Shaw

Lawrence L. Weathers

Dr. Margaret Felder Wilson

Representing Calhoun County:

Mr. David Rickenbaker

Katie Hane

HISTORY

The history of technical education in Orangeburg and Calhoun Counties began many years before Orangeburg-Calhoun Technical College officially opened in 1968. Previous to this date, many citizens were concerned about the future of Orangeburg and Calhoun Counties and felt the need to take action to ensure the counties' growth.

At that time, the two principal economies in the state were textiles and agriculture - both of which were having problems. South Carolina was losing her most valuable resource - her young people - who were taking jobs out of state.

Then Governor Ernest F. Hollings signed legislation in 1961 creating the technical education system. Its purpose was to help encourage economic growth in South Carolina by attracting more industries to the state and to provide job training for South Carolinians who would be employed by those industries.

The South Carolina General Assembly passed legislation in May 1966 creating the Orangeburg-Calhoun Area Commission for Technical Education. This commission was charged with the responsibility of developing and implementing an adequate training program at the post-secondary level. On October 25, 1967, state officials, all of whom had a hand in making the new Technical Education Center a reality, participated in officially breaking ground for the facility, which today is known as Orangeburg-Calhoun Technical College.

On September 16, 1968, Orangeburg-Calhoun Technical Education Center registered its first students, becoming the eleventh South Carolina Center in operation. During the official dedication ceremonies held on May 16, 1969, the late Senator Marshall B. Williams stated that this new education facility "represents the dreams and work of many people in the area".

An important milestone in the development of how the College is recognized today was marked on December 2, 1970, when Orangeburg-Calhoun Technical Education Center Director Charles P. Weber announced that the institution had become fully accredited by the Southern Association of Colleges and Schools Commission on Colleges (SACSCOC). Today, OCtech is also fully accredited by SACSCOC to award Associate in Arts, Associate in Science and Associate in Applied Science degrees. This

recognition was particularly notable in that it was the first time that a technical college had received accreditation in its first two years of operation.

Upon recommendation by the Orangeburg-Calhoun Area Technical Education Commission and approved by the State Board for Technical and Comprehensive Education, the Center's name was changed in May 1974 to Orangeburg-Calhoun Technical College. The purpose of this change was to more accurately reflect the College's post-secondary education mission. The director's title was changed to that of president at the same time.

The campus, built on land that had previously been a dairy farm, included 84,232 square feet of classrooms, labs and administrative offices. In early 1974, an expansion program, estimated to add 140,000 square feet of usable space, was begun. The new additions housed administrative offices, student personnel services and a learning resource center. These buildings were dedicated in 1978 to two men recognized for the vital roles they played in the success of technical education. The Gressette Learning Resource Center was named in honor of Senator L. Marion Gressette of St. Matthews, and the Williams Administration Building in honor of Senator Marshall B. Williams of Orangeburg.

Since its inception, Orangeburg-Calhoun Technical College has continued to seek new avenues for growth both academically and technically; and in 1988 the College marked its 20th anniversary with the opening of the Health Sciences Building. After 11 years in the planning stage, this 32,430 square foot, \$3.3 million symbol of continuous commitment to quality health care training began holding its first classes in September 1988.

In January 1993, the College dedicated buildings to its three OCtech Area Commission charter members. In a ceremony marking the occasion, the Industrial/Technology, Business/Computer Technology and Faculty Administration buildings were named in honor of Joe K. Fairey II, John O. Wesner, Jr. and Ben R. Wetenhall, respectively.

The Distance Learning Center brought video conferencing capabilities to the OCtech campus in 1996. This interactive center is connected to all 16 colleges in the South Carolina Technical Education System, giving them the technological ability to work with one another by providing additional services and educational programs, not heretofore available to their respective communities. The system-wide video conferencing capability also allowed the 16 colleges in the System to offer a more comprehensive selection of educational opportunities in a cost-effective manner while avoiding duplication within their service areas.

After receiving full approval to proceed with its distance learning initiatives by SACS in early 1998, OCtech began optimizing use of its new technology by pioneering a program, which offered college credit courses over the Internet. In taking this bold new step, OCtech opened up limitless educational opportunities to the community.

In 2002, the College developed a comprehensive five-year strategic plan to continue to move the College forward in educating and training the community. Strategic planning continues on a five-year cycle with annual updates.

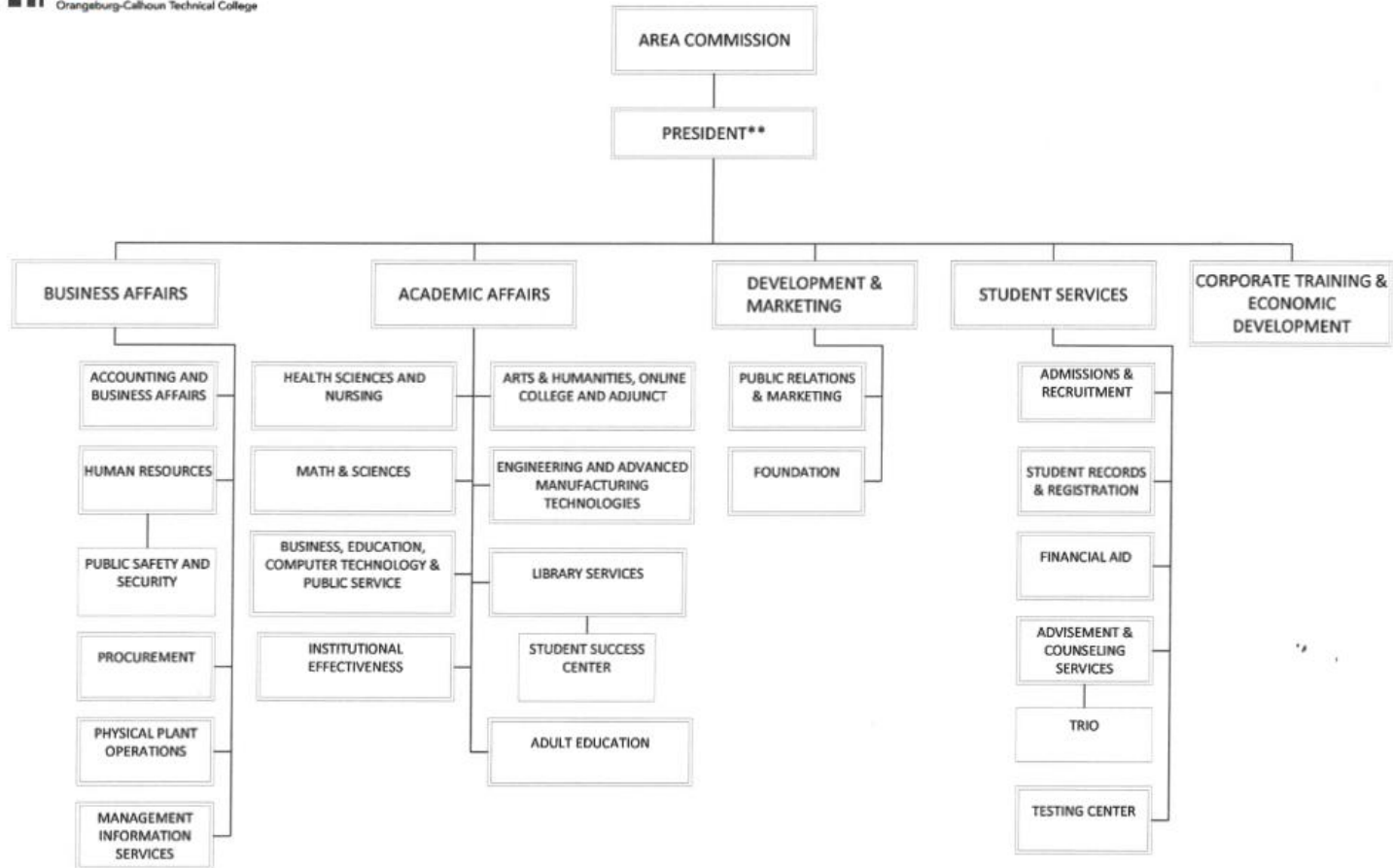
In January 2002, OCtech broke ground for a 37,000 square foot, \$5.2 million Student Services Building. In April 2003, OCtech cut the ribbon on its new Student and Community Life Center. Located here are Student Services, Marketing, and Development offices, and the president's office. This building also features the Tourville Learning Lab and meeting rooms, all of which are open to the public.

Orangeburg-Calhoun Technical College completed extensive renovations to both the Gressette and the Williams buildings in 2004. The Math and Science Center was formally opened in December 2006 with needed laboratories, classrooms, lecture halls and a 400 seat auditorium.

The Anne S. Crook Transportation and Logistics Center, named in honor of the former president, opened on May 10, 2010. This state of the art 25,000 square foot building houses classroom and laboratory space for welding, mechatronics, truck driver training and logistics programs. The College opened the Orangeburg-Calhoun Technical College QuickJobs Development Center in the summer of 2010 in St. Matthews.

Located strategically in the Global Logistics Triangle of I-26, I-95, and Highway 301, Orangeburg-Calhoun Technical College is moving forward to provide leadership and training in Advanced Manufacturing, Transportation, and Logistics.

The College continues to strive to fulfill the mission of the College by providing opportunities and services for the citizens of Orangeburg and Calhoun Counties.



**Exempt from State Employee Grievance Act.

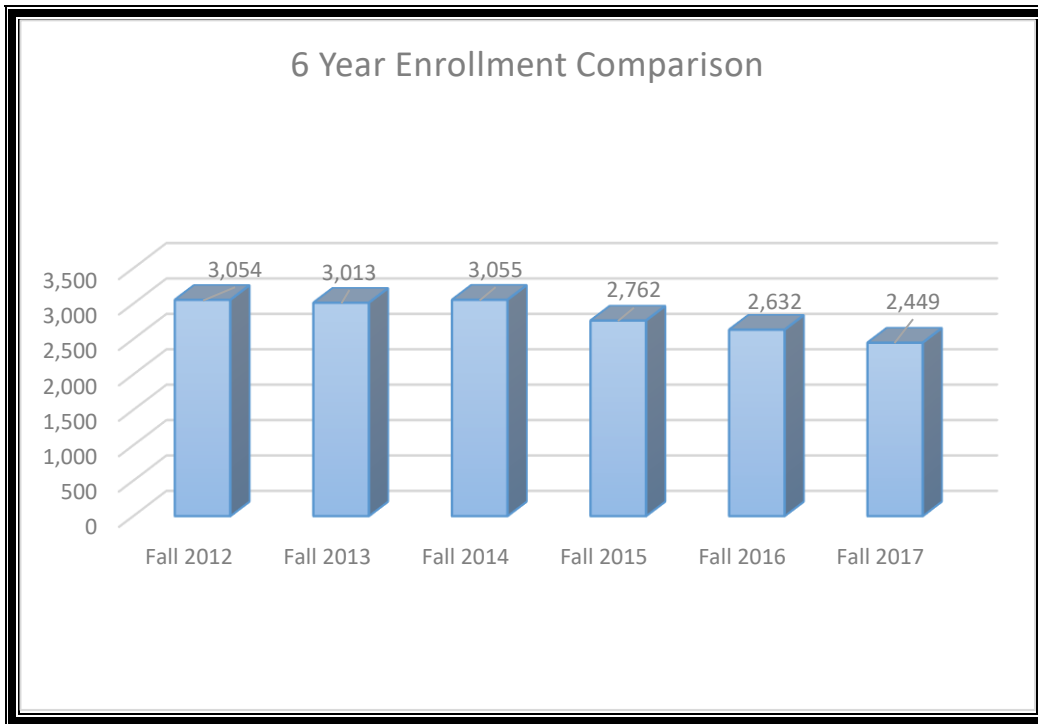
Positions are filled unless noted.

SOURCE: OCtech HR Department

ENROLLMENT

HISTORICAL ENROLLMENT TRENDS

Fall Enrollment History



**Note: Updated data for 2011FA from college moving to a new IT software platform.*

SOURCE: EDSS/IPEDS Closing Data (CERS)

Enrollment Trends Fall Terms 2014 – 2017

Term	Fall 2014	Fall 2015	Fall 2016	Fall 2017
Full-time	1296	1,074	1,014	872
Part-time	1759	1,688	1,618	1,577
Total Students	3055	2,762	2,632	2,449
New/FTF	522	438	362	366
Continuing	1515	1,463	1,400	1,234
Readmit	1	0	0	0
Transfer	287	257	279	235
High School	724	589	584	602
Transient	6	15	7	12
Orangeburg	1836	1,618	1,508	1,398
Calhoun	368	313	303	256
Other	851	831	821	795
Associate	1910	1,844	1,730	1,579
Diploma	99	94	104	95
Certificate	305	218	166	154
Non-declared	741	606	600	621
Black	1697 ^π	1497 ^π	1,444 ^π	1,340 ^π
White	1215 ^π	1139 ^π	1068 ^π	1,001 ^π
Other	160 ^π	147 ^π	140 ^π	132 ^π
Male	1192	999	926	841
Female	1863	1,763	1,706	1,608
In State	3019	2,728	2,601	2,417
Out of State	36	34	31	32
International	0	0	0	0
Total Count	3,055	2,762	2,632	2,449
Total Credits	29,566	26,021	24,825	11587
Avg Course Load	9.68	9.42	9.43	4.73
Total FTEs	1,971	1,735.53	16,655	1513.2

^π Students can declare more than one ethnicity or none

SOURCE: EDSS/IPEDS Closing Data (CERS)

Enrollment Trends Spring Terms 2014 - 2017

Term	Spring 2014	Spring 2015	Spring 2016	Spring 2017
Full-time	1111	1070	948	875
Part-time	1421	1566	1521	1,472
Total Students	2532	2636	2469	2,347
New/FTF	137	122	87	92
Continuing	1910	1831	1838	1,601
Readmit	1	0	2	0
Transfer	102	121	98	87
High School	375	548	422	551
Transient	7	14	22	87
Orangeburg	1607	1612	1456	1,397
Calhoun	230	250	228	220
Other	695	774	785	739
Associate	1763	1767	1661	1,540
Diploma	67	228	76	75
Certificate	311	74	284	155
Non-declared	391	567	448	577
Black	1321 ^π	1417 ^π	1301 ^π	1,263 ^π
White	1067 ^π	110 ^π	1048 ^π	987 ^π
Other	147 ^π	137 ^π	136 ^π	115 ^π
Male	950	967	891	819
Female	1582	1669	1,578	1,528
In State	2504	2611	2440	2,321
Out of State	28	25	29	26
International	0	0	0	0
Total Count	2532	2636	2,469	2,347
Total Credits	24,335	24,632	22,870	21,836
Avg Course Load	9.61	9.34	9.26	9.30
Total FTEs	1,622	1,642	1,524.67	1,544.33

^π Students can declare more than one ethnicity or none

SOURCE: EDSS/IPEDS Closing Data (CERS)

Enrollment Trends Summer Terms 2014 – 2017

Term	Summer 2014	Summer 2015	Summer 2016	Summer 2017
Full-time	179	185	151	168
Part-time	1,080	1,057	1,067	887
Total Students	1,259	1,242	1,218	1,055
New/FTF	75	53	50	42
Continuing	978	932	934	828
Readmit	0	1	2	1
Transfer	92	66	86	78
High School	2	26	20	5
Transient	112	164	126	101
Orangeburg	748	743	695	590
Calhoun	119	102	108	87
Other	392	397	415	378
Associate	939	885	911	817
Diploma	62	97	66	61
Certificate	136	65	75	63
Non-declared	122	195	166	114
Black	660 ^π	615 ^π	586 ^π	542 ^π
White	553 ^π	578 ^π	574 ^π	464 ^π
Other	52 ^π	60 ^π	69 ^π	57 ^π
Male	434	440	404	368
Female	825	802	814	687
In State	1,242	1,225	1,195	1,041
Out of State	17	17	23	14
International	0	0	0	0
Total Count	1,259	1,242	1,218	1,055
Total Credits	9,094	8,781	8,422	7,734
Avg Course Load	7.22	7.07	6.91	7.33
Total FTEs	606	585	561.47	515.60

^π Students can declare more than one ethnicity or none

SOURCE: EDSS/IPEDS Closing Data

ENROLLMENT DETAILS

Fall 2017 Fast Facts Total

Enrollment for Fall 2017 = 2,449 students

Fall 2017 FTE = 1513.20

Average Student Course Load for Fall 2017 = 21,836 credit hours

1,393 Duplicated students are enrolled in Internet Courses

During the Day, 7,862 duplicated students attend class on campus

During the evening, 654 duplicated students attend class on campus

***9.6% (235) of OC tech students enrolled for the fall transferred from another college**

602 Students are enrolled in the Middle College program for Fall 2017 compared to 584 in Fall 2016

**SOURCE: EDSS/IPEDS Closing Data (CERS)*

Enrollment Trends by Active Academic Program Fall 2014 – Fall 2017

Academic Program	Fall Headcount				Fall FTE			
	2014	2015	2016	2017	2014	2015	2016	2017
Associate in Arts	233	215	172	150	168.27	145.54	118.8	99.53
Associate in Arts-Bridge- USC	-	4	-	5	-	3	-	3.93
Associate in Arts-Bridge- SCS	-	1	-	-	-	0.6	-	-
Associate in Applied Science in Accounting	31	29	29	9	22.67	21.4	20.47	6
*Associate in Applied Science in Business Administration/Accounting	-	-	-	19	-	-	-	12.8
*Associate in Applied Science in Business Administration/ENTMGT	-	-	-	44	-	-	-	31.20
Associate in Applied Science in General Business	90	88	81	44	63.33	60.8	57.07	61.47
Associate in Applied Science in Administrative Office Technology	17	24	31	21	11.6	15	21.33	13.2
Associate in Applied Science in Computer Technology	98	91	96	78	75.07	69.07	34.01	58.2
*Associate in Applied Science in Engineering Design Technology	-	-	-	9	-	-	-	6.27
Associate in Applied Science in Engineering Technology/ Electronic Instrumentation	110	83	72	54	96.73	70.87	63.67	44.67
Associate in Applied Science in Engineering Technology/CE	-	6	6	3	-	5	4.07	2.27
*Associate in Applied Science in Engineering Technology/ Programming	-	-	-	5	-	-	-	3.53
*Associate in Applied Science in Engineering Technology/ Programming - Transfer	-	-	-	4	-	-	-	2.67
Associate in Applied Science in Nursing	122	118	135	102	72.33	72.07	81.94	61.47
Associate in Applied Science in Nursing-FLEX	-	-	9	9			6.07	6.6
Associate in Applied Science in Nursing-Transition	-	4	0	3		2.93	0	1.8
Associate in Applied Science in Physical Therapy Assistant	18	15	19	15	19.2	18.6	19.53	14.6
Associate in Applied Science in Radiologic Technology	22	20	22	25	17.2	15.27	17	19.87
Associate in Applied Science in Respiratory Therapy	23	20	18	21	19.67	15.93	13.8	18.6
Associate in Applied Science in Automotive Technology	56	40	38	26	39.13	30.13	26.33	20.4
Associate in Applied Science in Industrial Electronics Tech.	33	19	20	24	25.13	15.53	16.33	18.53
Associate in Applied Science in Machine Tool Technology	30	25	19	27	28.2	21.27	17.4	25.2
Associate in Applied Science in General Technology	122	153	174	151	88.6	115.86	122.66	102.60
Associate in Applied Science in Criminal Justice	113	100	79	56	78.2	73.67	56.6	40.8
Associate in Applied Science in Early Childhood Education	62	60	53	37	39.27	39.27	35.6	25.67A
Associate in Applied Science in Paralegal/Legal Assistant	20	29	33	30	13.6	21.8	23.47	22.27
*Associate in Science - Food Science Program	-	-	-	1	-	-	-	0.93
Associate in Science	95	86	83	75	69	60.21	58.99	53.81
Associate in Science -Prep	581	600	557	505	390.54	376.39	360.95	307.13
Associate in Science Degree - Sc State Bridge Program	1	-	1	-	.87	-	0.53	-
Associate in Science Degree Usc Bridge Program	9	5	5	3	6	4.13	3.47	2.07
Associate in Science - Nursing - Usc Upstate Adn to Bsn	22	13	29	23	12.47	7.4	17.07	13
Certificate in Basic Accounting	7	7	4	6	3.4	3.4	2.4	2.4
Entrepreneurship Certificate	8	5	6	-	5.27	2.2	2.53	0.80
Certificate in Logistics	-	3	5	1		1.6	2.6	0.40
Certificate in Database & Programming	-	1	6	1		08	5.4	0.40
Certificate in Network Engineering/MCSE	1	2	4	-	.2	05	3.4	-
Certificate in Internetworking/CISCO	-	-	4	-			3.6	-
Certificate in Network Specialist	1	5	5	1	.6	3.8	4	0.40

Academic Program	Fall Headcount				Fall FTE			
	2014	2015	2016	2017	2014	2015	2016	2017
Certificate in Web Master	3	2	2	-	1.2	1.2	1.2	-
Health Physics Certificate I	1	-	-	-	.6	-	-	-
Certificate in Computer-Aided Design 1	1	1	2	-	.33	.6	.67	-
Certificate in Computer-Aided Design II	-	-	2	-	-	-	.67	-
Certificate in Computer-Aided Design II	-	-	2	-	-	-	.67	-
Certificate in Health Science in Nursing Assistant	-	-	-	2	-	-	-	0.80
Certificate in Health Science in Pre-Health Info Mgmt.	1	-	-	-	.4	-	-	-
Certificate in Emergency Medical Technician	14	13	14	12	7.6	6.27	7.47	4.67
Cert. in Health Science in Pre-Occupational Therapy Assistant	1	-	-	-	.60	-	-	-
Cert. in Health Science in Pre-Physical Therapy Assistant	-	-	-	-	-	-	-	-
Cert. in Health Science in Patient Care Tech	158	110	72	68	98.2	60.6	39.8	41.07
Certificate in Magnetic Resonance Imaging	9	7	9	9	9.53	8.4	10.47	10.73
Certificate in Mammography	11	9	12	5	6.80	5.07	12.93	5.33
Certificate in Computed Tomography	6	4	-	-	3.60	2.4	-	-
Advanced Certificate in Industrial Maintenance	-	-	-	-	-	-	-	-
Certificate in Basic Industrial Maintenance	7	1	3	2	6.13	.87	1.47	0.80
Certificate in Basic Diesel Maintenance	-	-	1	-	-	-	0.93	-
Certificate in Basic Electrician	-	2	1	8	-	1.07	0.27	4.80
Certificate in Basic Welding	25	25	22	10	14.2	14.93	13.33	5.60
Certificate in Industrial Electrician	-	-	1	1	-	-	0.27	0.47
Welding Fundamentals Certificate	-	-	2	-	-	-	1.13	-
Intermediate Cert. in Ind. Maintenance	-	-	4	-	-	-	2.47	-
Intermediate Welding Certificate	1	-	-	1	0.53	-	-	0.93
Certificate in Mechatronics I	4	2	2	1	3.13	1.87	1.6	0.40
Certificate in Mechatronics II	-	-	4	-	-	-	2.8	-
Certificate in Mechatronics III	-	-	2	-	-	-	1.2	-
Certificate in Power Plant Technology I	1	1	3	-	.93	.93	1.13	-
Certificate in Power Plant Technology II	-	-	-	-	-	-	-	-
Certificate in Power Plant Technology III	-	-	-	-	-	-	-	-
Certificate in Production Operator	-	-	-	3	-	-	-	3.20
Certificate in Radiation Fundamentals	-	-	-	1	-	-	-	0.87
Certificate in Under Car Specialist	-	-	1	-	-	-	0.53	-
Certificate in Truck Driver Training	32	17	28	24	24.53	13.6	22.4	22.4
Certificate in Sustainable Agriculture	1	1	-	1	.8	.8	-	0.80
Certificate in General Studies	-	-	1	-	-	-	1.6	-
Certificate in Early Childhood Development	3	2	2	-	1.8	.6	1.4	-
Forensics Certificate Program	6	6	3	2	4.2	3.53	1.73	1.2
Certificate in Security	1	5	2	-	.6	2.6	1.4	-
Certificate in Undergraduate Student Middle College	725	590	583	601	348.07	249.13	255.53	260.53
Diploma in Applied Science in Administrative Support	4	2	3	3	2.6	1.2	1.6	1.60
Diploma in Applied Science in Early Childhood Development	2	2	2	2	1.25	1	1.2	1.4
Diploma in Applied Science in Medical Lab Office Assisting	23	21	41	18	16.27	16.87	32.13	14.6
Diploma in Applied Science in Practical Nursing	70	55	56	60	46.62	38.73	45	38.33
Diploma in Applied Science in Practical Nursing – FLEX	-	-	-	17	-	-	-	11

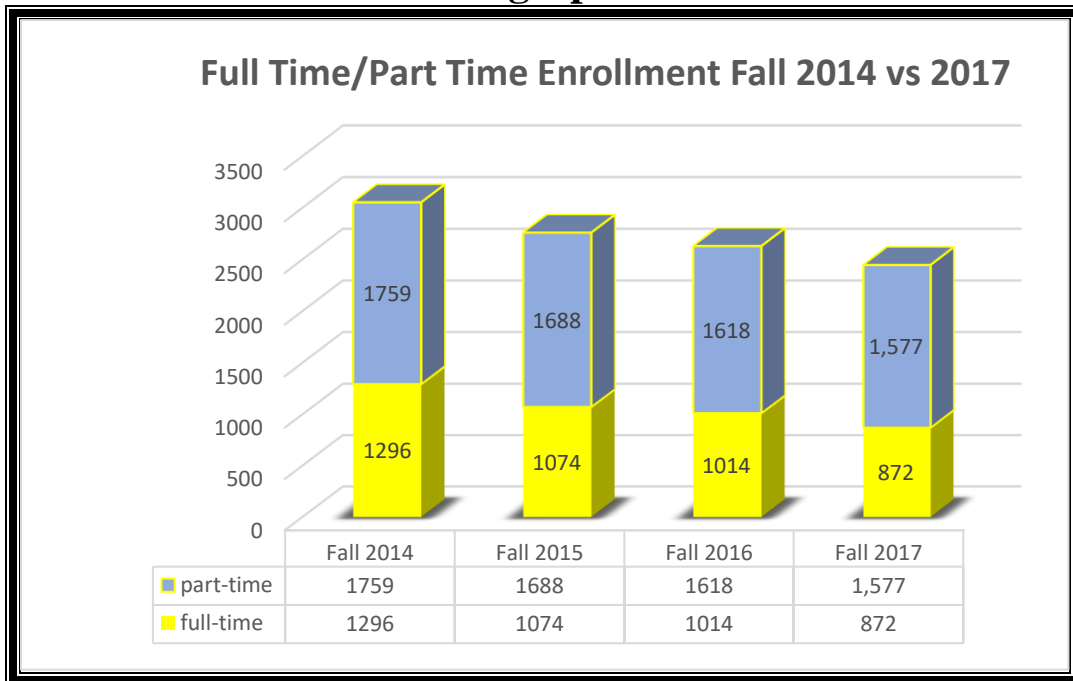
Academic Program	Fall Headcount					Fall FTE			
	2014	2015	2016	2017		2014	2015	2016	2017
Career Development and Non Degree General Education	11	2	9	7		3.87	.4	1.87	1.73
Undecided/Unknown	1	1	0	4		.8	.8	0	1.93

*New Programs starting in Fall 2017

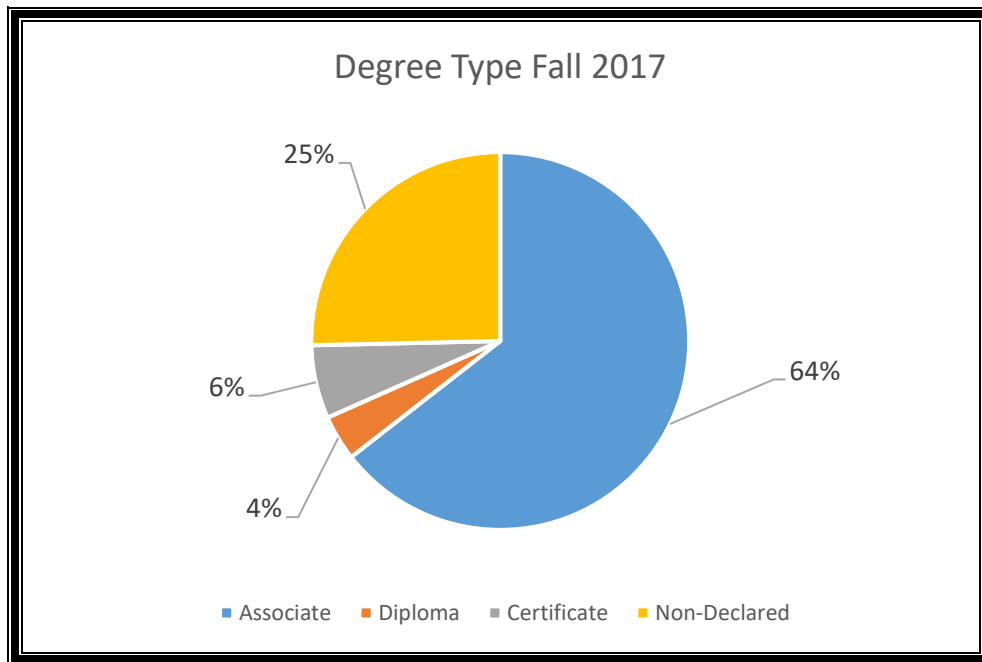
Unduplicated Totals

SOURCE: XHFR-Datatel

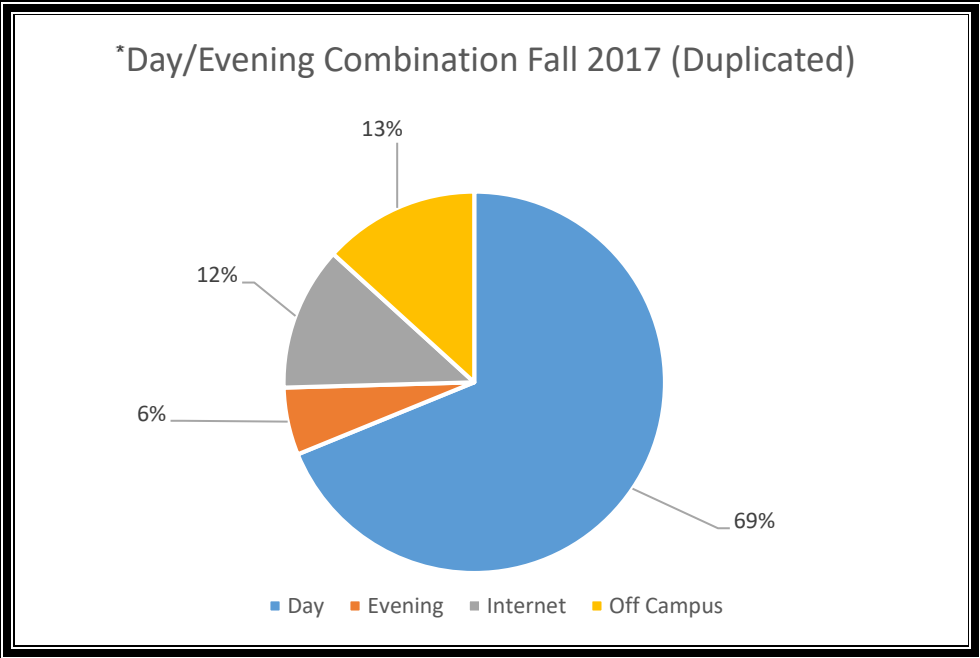
Fall 2017 Enrollment Demographics



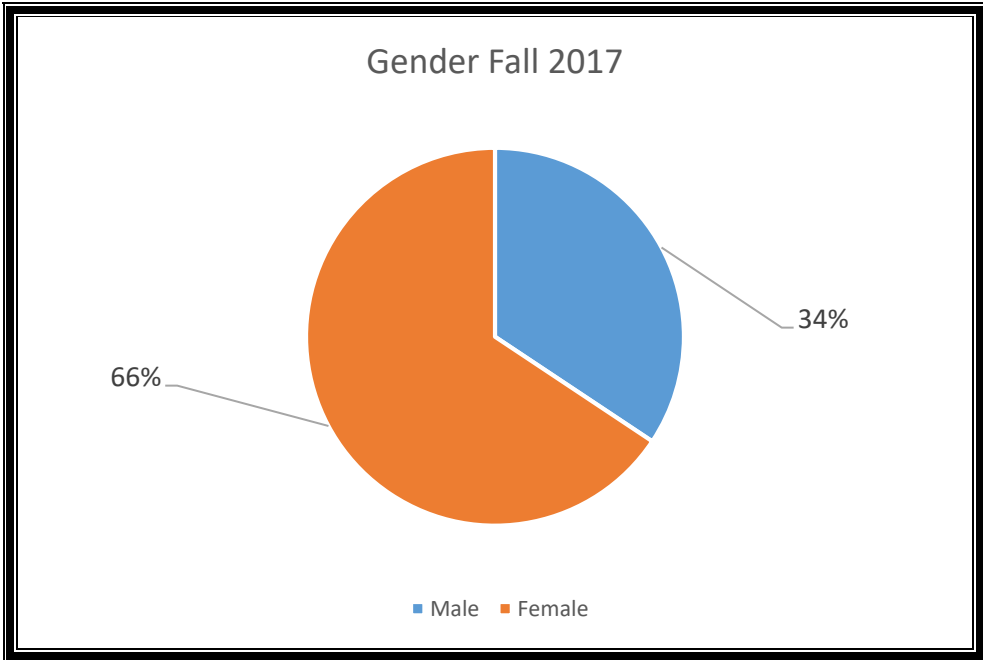
SOURCE: EDSS/IPEDS Closing Data (CERS)



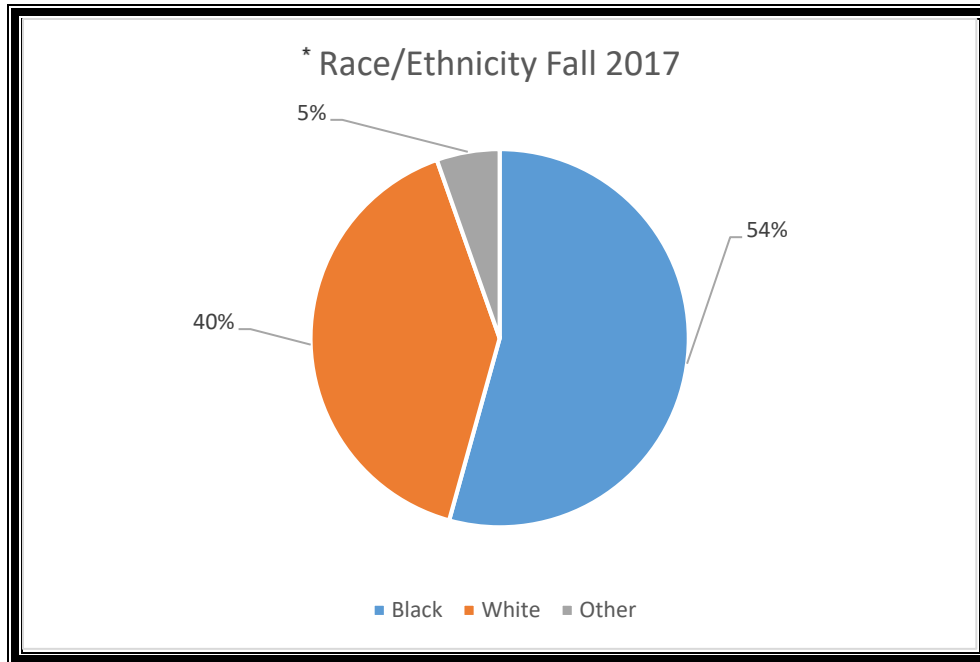
SOURCE: EDSS/IPEDS Closing Data (CERS)



**Note: Detailed enrollment data for Day/Evening Combinations is duplicated.
 SOURCE: EDSS/IPEDS Closing Data (CERS)*

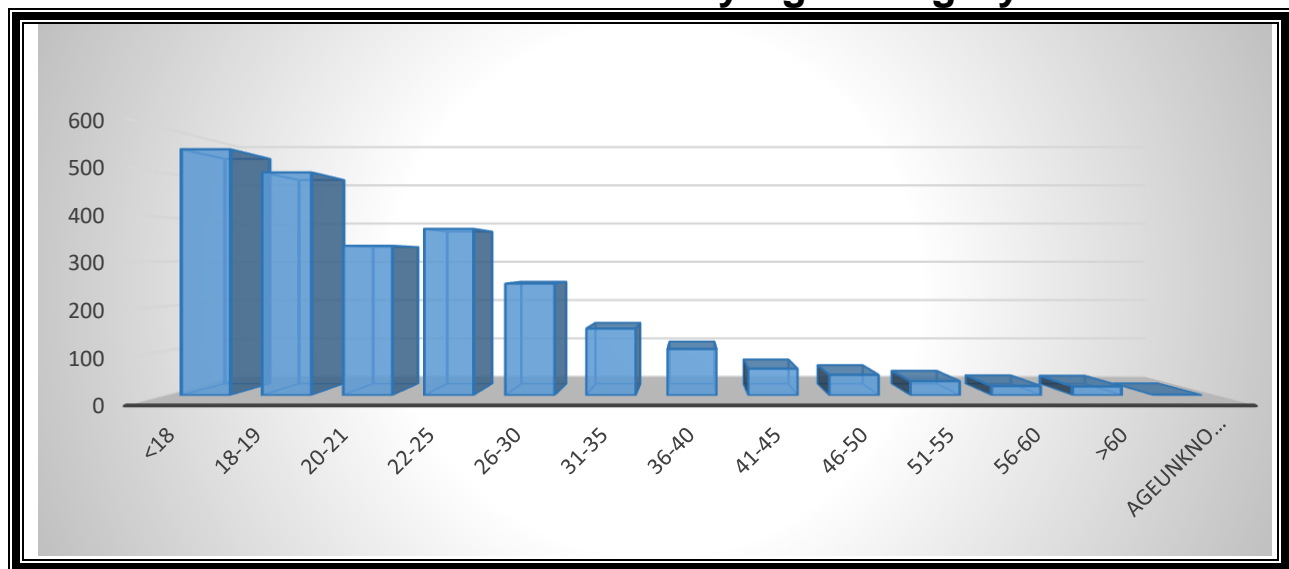


SOURCE: EDSS/IPEDS Closing Data (CERS)



*Note: Due to some students claiming more than one ethnicity there will be some duplication.
 SOURCE: EDSS/IPEDS Closing Data (CERS)

Fall 2017 Enrollment by Age Category



The under 18 Age Category is comprised of high school students participating in dual enrollment courses through the Middle College program.

SOURCE: EDSS/IPEDS Closing Data (CERS)

Under 18	18-19	20-21	22-25	26-30	31-35	36-40	41-45	46-50	51-55	56-60	>60	Age Unknown Unreported
533	501	336	374	251	150	104	60	46	32	21	20	1

34.18% of students fall into the traditional age (18-21) category

SOURCE: EDSS/IPEDS Closing Data (CERS)

Professional Exam Subset

April 2014 to March 2015

April 2015 to March 2016

April 2016 to March 2017

April 2017 to March 2018

Name of Exam	April 2014 to March 2015				April 2015 to March 2016				April 2016 to March 2017				April 2017 to March 2018			
	# of Examinees	# of 1st Time Examinees	# of 1st Time Examinees who Passed	Pass Percentage	# of Examinees	# of 1st Time Examinees	# of 1st Time Examinees who Passed	Pass Percentage	# of Examinees	# of 1st Time Examinees	# of 1st Time Examinees who Passed	Pass Percentage	# of Examinees	# of 1st Time Examinees	# of 1st Time Examinees who Passed	Pass Percentage
Technical Sector																
Certification Examination For Entry Level Respiratory Therapy Practitioners (CRTT)	12	12	10	83.3%	9	9	8	89%	6	6	4	67%	9	4	4	100%
Certified Medical Assistant Exam.					17	17	10	59%	13	13	10	77%	18	18	8	44%
Medical Laboratory Technician, ASCP																
Emergency Medical Technician - NREMT	11	11	9	82%	6	6	3	50%	10	10	6	67%	12	12	5	42%
National Council Licensure Exam. (NCLEX) - Practical Nurse	43	43	41	95.3%	43	42	41	98%	53	53	48	90.5%	47	45	45	100%
National Council Licensure Exam. (NCLEX) - Registered Nurse (ADN)	44	44	43	97.7%	38	38	38	100%	43	43	43	100%	51	49	45	91.8%
National Physical Therapist Assistant Licensing Exam (PTA)					12	12	8	67%	14	14	14	100%	14	14	14	100%
Nurse Aid Competency Evaluation Program (NACEP)	120	120	101	84%	70	70	69	99%	97	97	93	96%	100	100	95	95%
Radiography Exam., ARRT	8	8	8	100%	9	9	9	100%	8	8	8	100%	9	9	9	100%
Registry Exam. for Advanced Respiratory Therapy Practitioners (RRT) – Clinical Simulation	9	9	4	44.4%	8	8	7	88%	4	4	3	75%	5	4	3	75%
Registry Exam. for Advanced Respiratory Therapy Practitioners (RRT) – Written Registry	10	10	3	30%	9	9	8	89%	4	4	3	75%	9	4	4	100%
College Totals	257	257	219	85.2%	221	220	201	91.3%	233	233	218	93.56%	247	237	220	92.8%

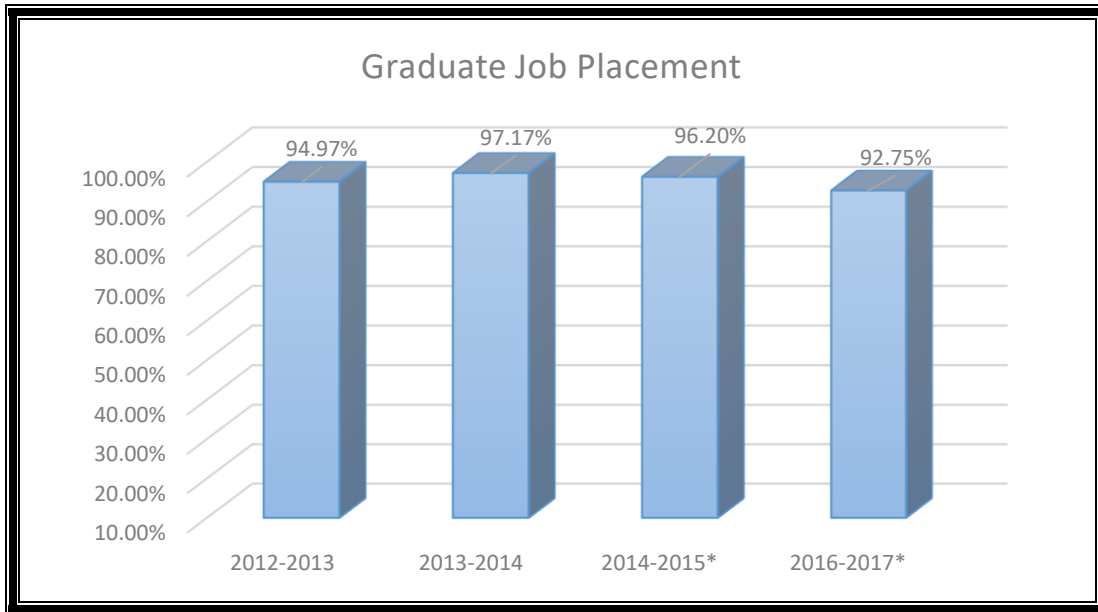
SOURCE: Results of Professional Examinations Report

Graduate Job Placement

	2012-2013	2013-2014	2014-2015*	2016-2017*
OCTC	94.97%	97.17%	96.20%	92.75%

**Unofficial*

Source: OCTech's Office of Institutional Effectiveness



**Unofficial*

Source: OCTech's Office of Institutional Effectiveness

FACULTY AND STAFF

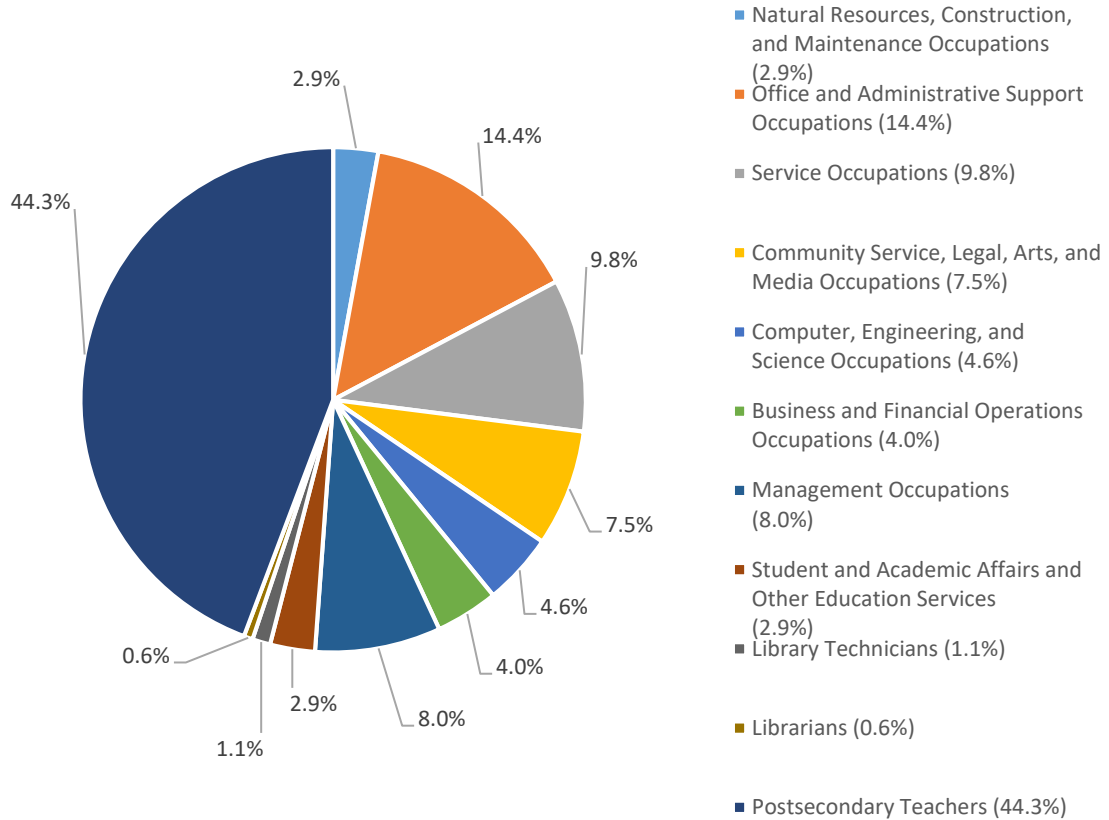
Full Time Staff by Area of Responsibility

Year	Natural Resources, Construction, and Maintenance Occupations (2.9%)	Office and Administrative Support Occupations (14.4%)	Service Occupations (9.8%)	Community Service, Legal, Arts, and Media Occupations (7.5%)	Computer, Engineering, and Science Occupations (4.6%)	Business and Financial Operations Occupations (4.0%)	Management Occupations (8.0%)	Student and Academic Affairs and Other Education Services (2.9%)	Library Technicians (1.1%)	Librarians (0.6%)	Postsecondary Teachers (44.3%)	Total
2013-2014	6	34	18	27	9	11	16		1	1	82	205
2014-2015	6	30	14	27	8	8	15		1	1	82	192
2015-2016	6	25	15	13	9	8	14	5	2	1	82	180
2016-2017	6	25	16	11	9	8	14	5	2	2	80	180
2017-2018	5	25	17	13	8	7	14	5	2	1	77	174

*Modifications made in the Fall 2013 IPEDS

SOURCE: EDSS/IPEDS Closing Data (CERS)

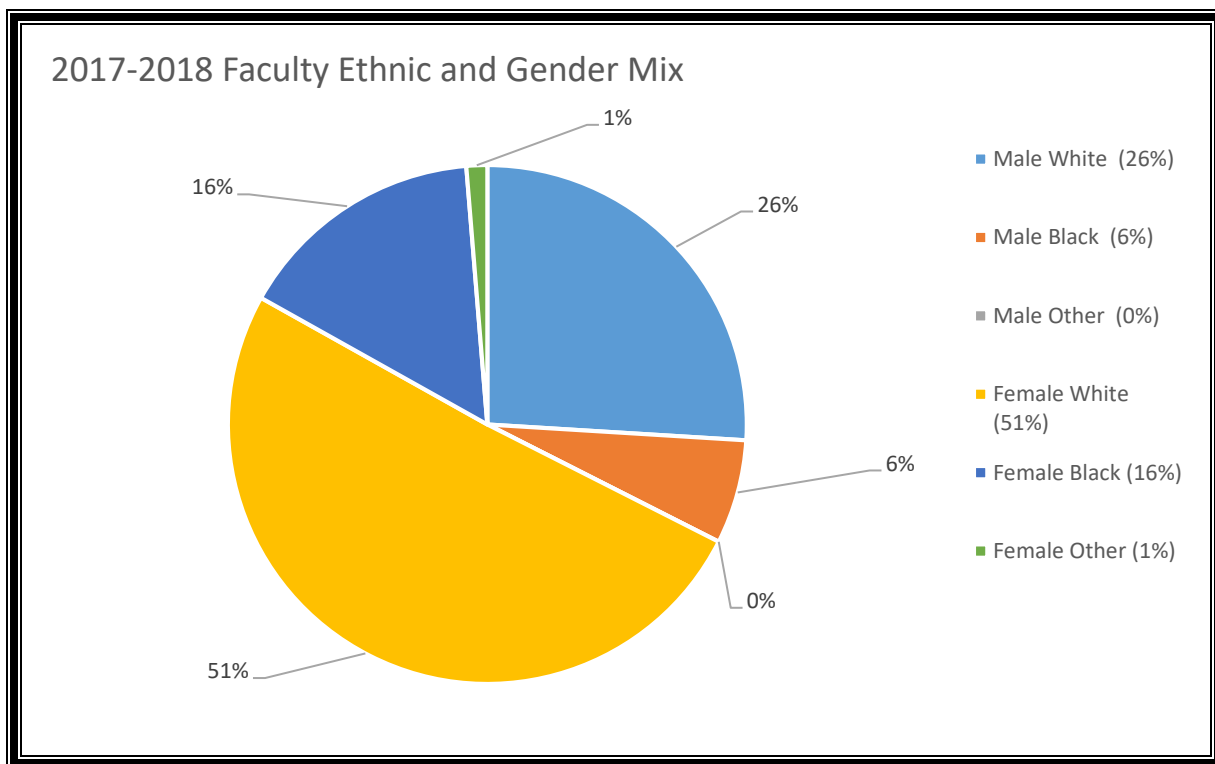
2017-2018 Faculty and Staff



SOURCE: EDSS/IPEDS Closing Data (CERS)

Year	Male White (26%)	Male Black (6%)	Male Other (0%)	Female White (51%)	Female Black (16%)	Female Other (1%)	Total
2013-14	23	3	0	39	15	2	82
2014-15	23	4	0	40	14	1	82
2015-16	21	4	0	40	16	1	82
2016-17	20	4	0	40	15	1	80
2017-18	20	5	0	39	12	1	77

SOURCE: EDSS/IPEDS Closing Data (CERS)



SOURCE: EDSS/IPEDS Closing Data (CERS)

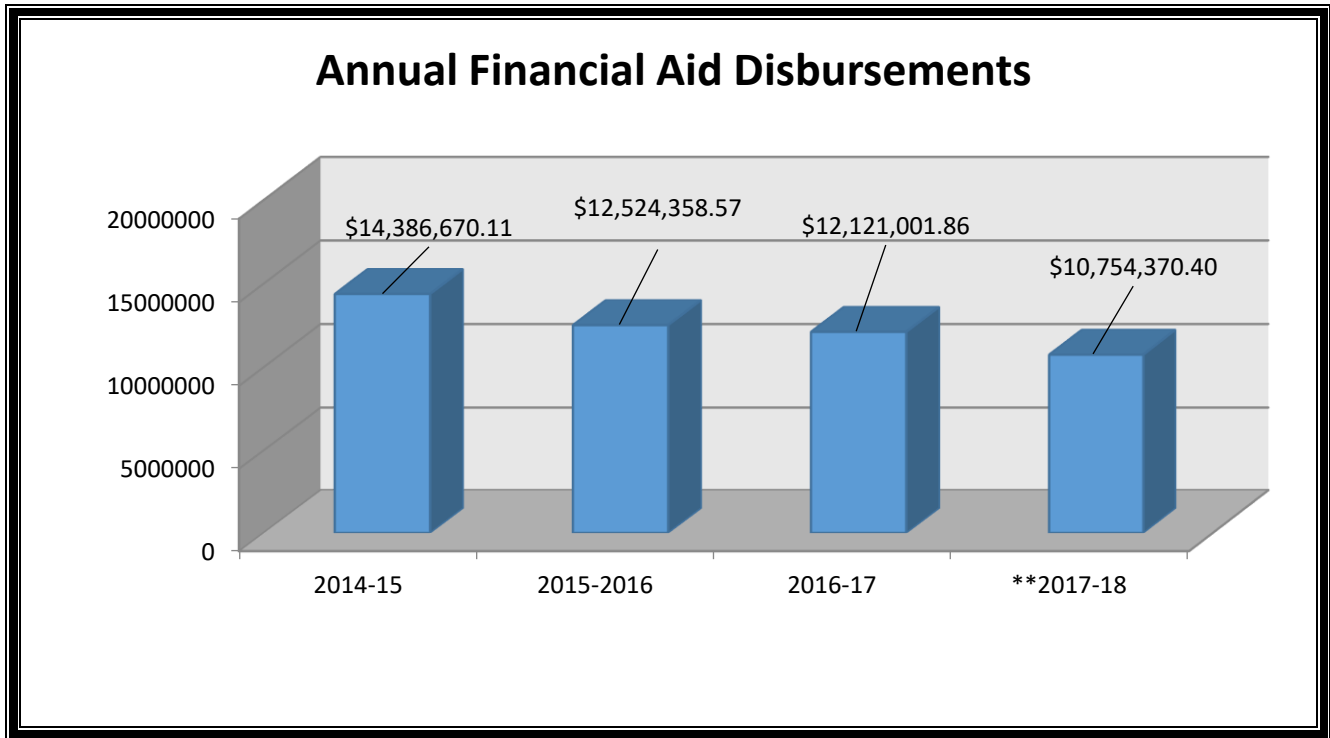
Annual Financial Aid Disbursements

AWARD	2015-2016	2016-17	2016-17	**2017-18
PELL	\$7,214,128.80	\$6,299,880.44	\$5,734,450.86	\$5,616,513.44
SEOG	\$143,621.56	\$141,914.97	\$132,109.00	\$128,440.96
South Carolina Needs Based Grant	\$274,508.00	\$273,582.00	\$264,807.00	\$246,754.00
Life Scholarship	\$783,558.00	\$613,035.00	\$685,800.00	\$827,960.00
Lottery Tuition Assistance	\$1,940,294.75	\$1,957,691.16	\$1,944,661.00	\$1,555,693.00
Direct/Stafford Loans	\$4,030,559.00	\$3,238,255.00	\$3,359,174.00	\$2,379,009.00
Other Grants (STEP, MAHP, SCAMP, Perkins)	0	0	0	0
Grand Totals	\$14,386,670.11	\$12,524,358.57	\$12,121,001.86	\$10,754,370.40

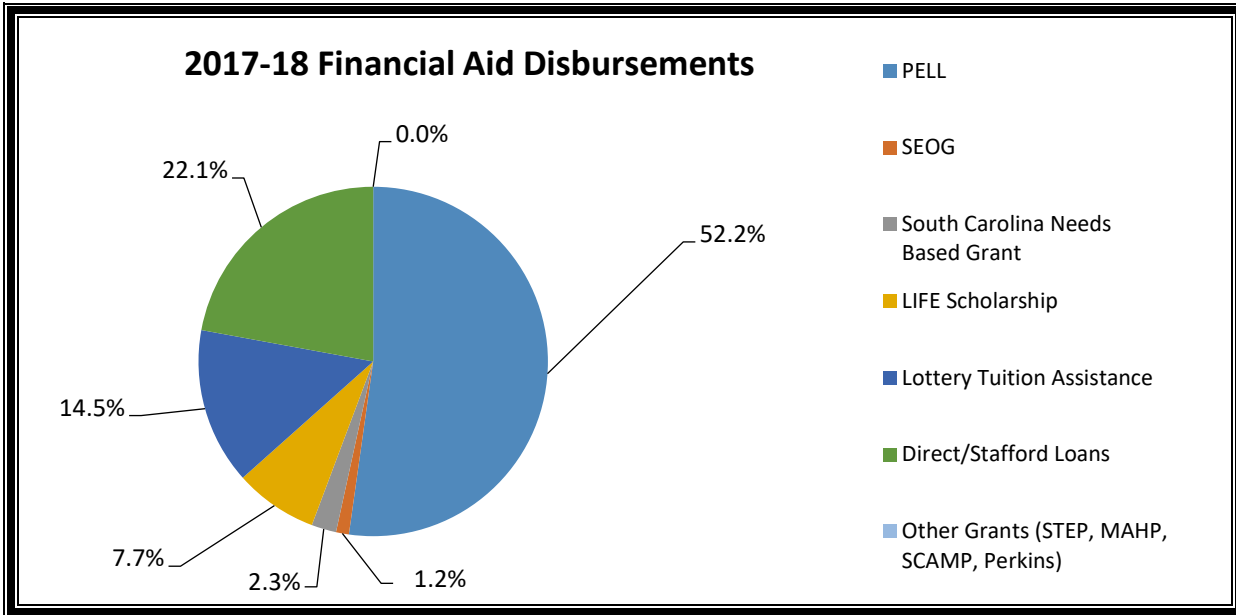
Lottery Tuition was established in Fall 2002

*** Data is as of Wednesday, December 5, 2018*

SOURCE: Otech's Financial Aid Office



SOURCE: Otech's Financial Aid Office



SOURCE: Otech's Financial Aid Office

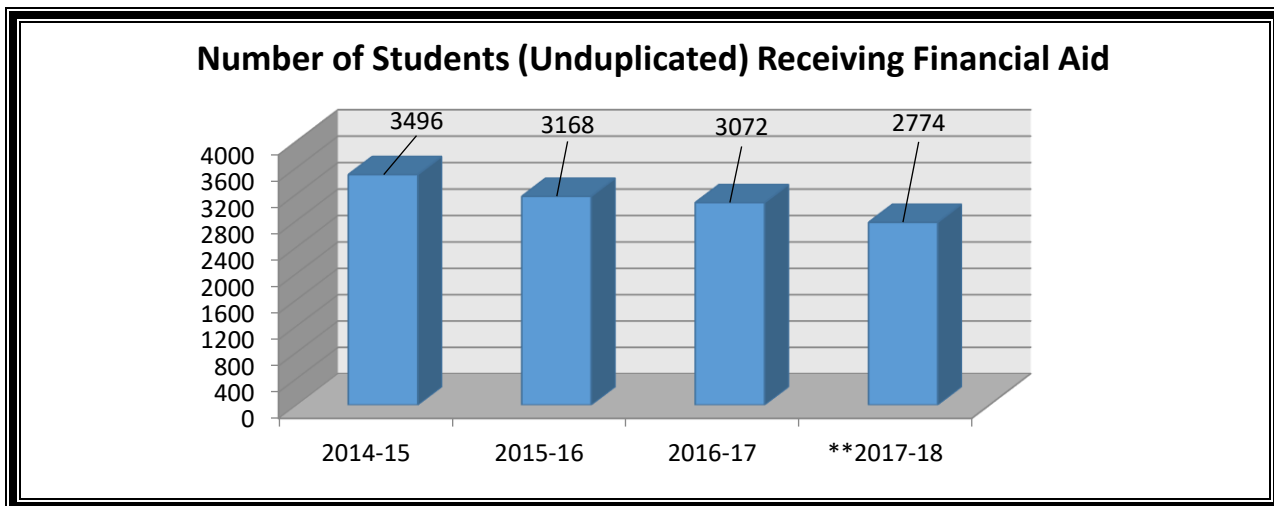
Number of Students (Unduplicated) Receiving Financial Aid

AWARD	2014-15	2015-16	2016-17	**2017-18
PELL	2169	1884	1714	1627
SEOG	355	350	317	323
South Carolina Needs Based Grant	319	279	244	241
Life Scholarship	194	143	166	189
Lottery Tuition Assistance	1695	1690	1716	1445
Direct/Stafford Loans	884	747	710	597
Other Grants (STEP, MAHP, SCAMP, Perkins)	0	0	0	0
Grand Totals Unduplicated	3496	3168	3072	2774

Lottery Tuition was established in Fall 2002

** Data is as of Wednesday, December 5, 2018

SOURCE: Otech's Financial Aid Office



SOURCE: Otech's Financial Aid Office

GRESSETTE LEARNING RESOURCES CENTER

Library Operating Expenditures (excluding salaries)

Collections	2014-2015	2015-2016	2016-2017	2017-2018
Printing	-	-	12.28	230.81
Other Contractual Services	-	-	10,929.67	13,072.06
Office Supplies	-	-	2,542.79	2,137.47
Educational Supplies	-	-	417.48	1,658.07
Postage	-	-	33.76	40.14
Other Supplies	-	-	42.62	274.76
Dues and Memberships	-	-	26,811	24,011
Subscriptions	-	-	1,692	500
Travel	-	-	1,518.93	1,047.96
Books <i>(Printed Material for 2013-14, 2014-15, and 2015-16)</i>	11,142.42	10,243.58	10,996.46	14,622.43
Periodicals <i>(Current Serial Subscription for 2013-14, 2014-15, and 2015-16)</i>	2,971.63	3,337.10	3,060.12	3,197.85
Databases	24,917.73	26,167.87	26,911.80	29,730.50
eBooks	3,269.61	1,059.20	0.00	0.00
Multimedia Supplies	2,614.03	4,364.95	4,050.84	1,374.80
Total Expenditures	\$44,915.42	\$45,172.70	\$89,019.75	\$91,897.85

Library operating expenditures

As of 2016-2017, expenditures have been adjusted to reflect the same format as detailed in the college's budget summary (via connect). Audio-Visual has been changed to Multimedia and includes multimedia expenditures from both the operational and material budget sections. Print Materials was changed to Books. Current Serial Subscription was changed to Periodicals. Microforms was removed. Electronic Books was changed to eBooks. New sections include: Printing, Other Contractual Services, Office Supplies, Educational Supplies, Postage, Other Supplies, Dues and Memberships, Subscriptions, and Travel

Library Resource Access, Use, and Transactions

	2014-15	2015-16	2016-17	2017-2018
Checkouts and Renewals <i>(General Collections for 2013-14, 2014-15, and 2015-16)</i>	3,024	2,921	2,750	2,018
eBooks Collection Access	4,143	2,586	2,736	648
Database Retrievals	63,970	71,123	49,845	
Books Sent out by OCTC (PASCAL/OCLC) <i>(Books Provided for 2013-14, 2014-15, and 2015-16)</i>	113	82	63	71
Books/Articles requested by OCTC (PASCAL/OCLC) <i>(Books/Articles Received for 2013-14, 2014-15, and 2015-16)</i>	326	348	363	256
LibGuide Page Views	-	-	5,211	5,901
Website Page Views	-	-	1,141	4,173
Online Catalog Sessions	-	-	2,020	1980
Reference/Questions, interactions	-	-	3,648	841
Number of library orientations and presentations	47	17	19	10
Number of persons served in library orientations and presentations	720	266	547	290

Library Resource Access, Use, and Transactions

Libguide page views is lower because of the update to the library's website and libguides, where the landing page is no longer a libguide. Attendance in the library per week changed to reflect average number per day, time of day, and day of week.

The pages viewed has been changed to number of sessions.

Library Collections (excluding databases, including ebooks)

	2014-2015		2015-2016		2016-2017			2017-18		
	Added/Weeded	Total	Added/Weeded	Total	Added	Discarded	Total Held in Collection	Added	Discarded	Total Held in Collection
Books	214	7,973	102	8,075	145	774	7,433	171	10	7572
Audio Visual	214	2,735	(484)	2,251	119	66	2,322	51	87	2237
Miscellaneous					5	0	245	15	1	260
Serial (Electronic)	1	0	0	0	3	0	34	0	0	253
Serial (Print)	(1)	36	(1)	35				0	0	34
Electronic Titles (OCTC catalog)	12,000	300,000	91,203	391,203	868	0	47,690	0	1	47,671
Ebook Collection (PASCAL)	-	-	-	-	N/A	N/A	429,710	N/A	N/A	379,604
Total Items					487,434					

Library Circulations

The Library Circulations heading was changed to Library Resource Access, Use, and Transactions and content was combined with Library Service.

Number of presentations was changed to Number of library orientations and presentations.

Database Retrievals was changed to Articles Accessed through Databases.

Public Service per typical week was removed and is replaced by reference questions/interactions.

Online catalog page views was changed to online catalog sessions

Usage of Library Facilities

Number of Times Someone Exited the Library (door counter)	
2016-2017	2017-2018
Total Number: 37,619	Total Number: 35,174
Number of Days Open: 236	Number of Days Open: 209
Average Number Per Day: 159	Average Number Per Day: 159

Number of People Who Were in the Library		
Time of Day	2016-2017	2017-2018
7:45	500	336
8:00	1153	1096
9:00	2607	2560
10:00	3536	3379
11:00	3708	3169
12:00	3645	3300
1:00	2883	2965
2:00	2289	2367
3:00	2056	1972
4:00	1831	1666
5:00	1569	1117
6:00	885	583
6:45	432	111
Total	27,094	24621

Number of People Who Were in the Library		
Day of the Week	2016-2017	2017-2018
Monday	6892	5772
Tuesday	7361	6167
Wednesday	7235	6831
Thursday	5099	4906
Friday	974	777

SOURCE: OCTech's Librarian

FINANCIAL DATA

Revenue Category	2014-15		2015-16		2016-17		2017-2018	
Net Tuition and Fees	\$4,971,760	18.34%	\$4,489,197	17.98%	\$4,653,361	19.38%	\$3,895,738	14.32%
State Appropriations	\$4,378,875	16.15%	\$4,780,817	19.14%	\$5,060,275	21.08%	\$5,498,528	20.20%
County Appropriations	\$1,428,740	5.27%	\$1,448,740	5.80%	\$1,448,740	6.04%	\$1,430,740	5.26%
Federal Grants/Contracts	\$10,188,090	37.57%	\$8,148,540	32.63%	\$6,917,805	28.81%	\$6,913,953	25.40%
State Grants/Contracts	\$3,646,720	13.45%	\$3,829,792	15.34%	\$3,813,763	15.88%	\$3,327,836	12.23%
Auxiliary	\$704,560	2.60%	\$557,035	2.23%	\$576,144	2.40%	\$448,345	1.65%
State Capital Appropriations	\$1,000,000	3.69%	\$1,000,000	4.00%	\$801,512	3.33%	\$4,517,502	16.60%
Transfer from State Agency	\$28,576	0.15%	\$0	0.00%	\$0	0.00%	\$0	0.00%
County Capital Appropriations	\$32,000	0.12%	\$0	0.00%	\$0	0.00%	\$500,000	1.84%
Other	\$733,657	2.66%	\$719,594	2.88%	\$739,071	3.08%	\$684,251	2.50%
Total Revenue	\$27,112,978	100%	\$24,973,715	100%	\$24,010,671	100%	\$27,216,893	100%

Source: Audited Annual Financial Statements in GASB format (OCtech's Finance Director)

Expense Category

Instruction Academic Support Student Services Operation and Maintenance of Plant
Institutional Support Scholarships Auxiliary Depreciation

Total Expenses

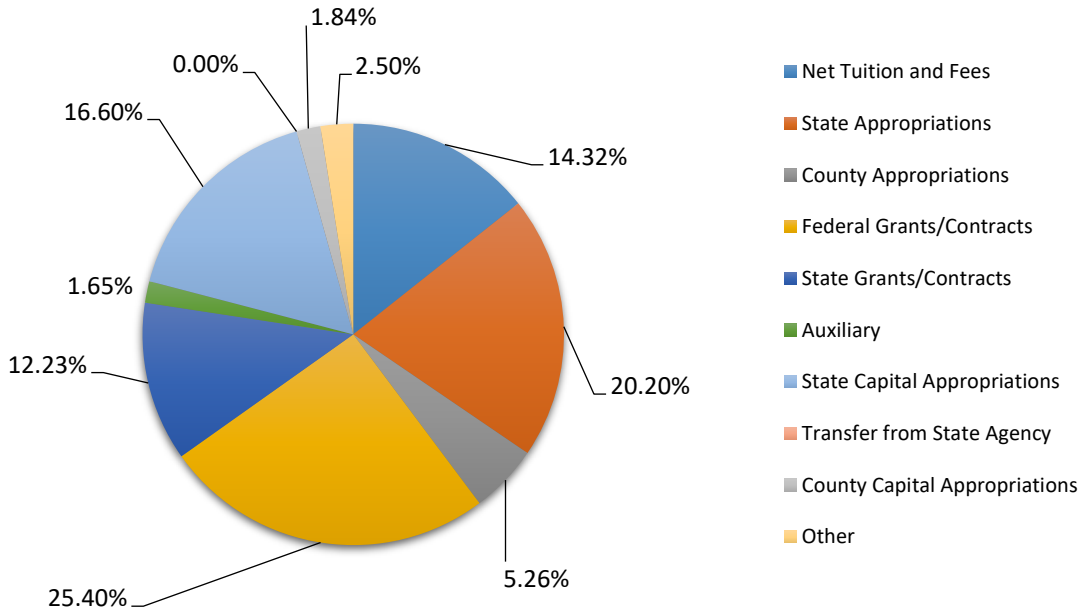
Increase in Net Assets

College Expenses

	2014-15		2015-16		2016-17		2017-18	
Instruction	\$9,964,510	37.98%	\$10,376,703	40.25%	\$10,148,066	37.24%	\$8,708,484	37.63%
Academic Support	\$2,366,349	9.02%	\$2,156,659	8.37%	\$2,563,969	9.41%	\$2,106,923	9.11%
Student Services	\$2,350,457	8.96%	\$2,374,062	9.21%	\$2,038,002	7.48%	\$1,946,428	8.41%
Operation and Maintenance of Plant	\$2,700,445	10.29%	\$2,787,300	10.81%	\$4,334,367	15.90%	\$3,285,990	14.20%
Institutional Support	\$2,742,074	10.45%	\$2,846,455	11.04%	\$3,098,689	11.37%	\$2,581,290	11.15%
Scholarships	\$3,286,825	12.52%	\$2,710,206	10.51%	\$2,554,530	9.37%	\$2,075,053	8.97%
Auxiliary	\$1,550,558	5.91%	\$1,325,029	5.14%	\$1,282,880	4.71%	\$1,164,843	5.03%
Depreciation	\$1,277,148	4.87%	\$1,202,182	4.67%	\$1,231,870	4.52%	\$1,273,296	5.50%
Total Expenses	\$26,238,366	100%	\$25,778,596	100%	\$27,252,373	100%	\$23,142,307	100%

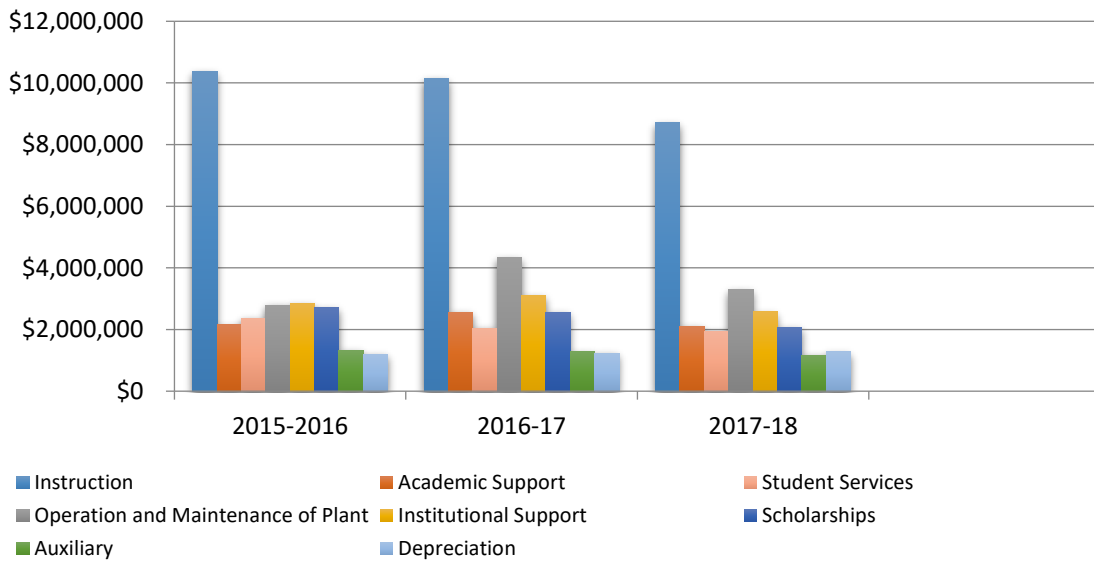
Source: Audited Annual Financial Statements in GASB format (OCtech's Finance Director)

2017-2018 College Revenues



Source: Audited Annual Financial Statements in GASB format (OCtech's Finance Director)

College Expenditure Trends



Source: Audited Annual Financial Statements in GASB format (OCtech's Finance Director)

OCTECH FOUNDATION

Orangeburg-Calhoun Technical College, Inc. Foundation

Orangeburg-Calhoun Technical College Foundation, Inc. Board Members 2014

Dwight W. Frierson, Chairman, Catherine C. Hughes, Vice-Chairman, Faith S. McCurry, Executive Director, Herbert W. Bradley, Jr., Angela Burroughs, Karen Crenshaw, Amy C. Delaney, Gary W. Dietrich, L. Dawes Edwards, John P. Evans, Joseph K. Fairey, IV, F. Reeves Gressette, Jr. (died 8/25/14), Katie D. Hane, Catherine F. Hay, Tippy Holleman, Robert R. Horger, Bob H. Horton, Maryanne Martin, Donna Matthews, Trina Murphy, Sherrill R. Newnam, Jacqueline S. Shaw, J. Howard Shirer, Jr., Randolph D. Smoak, Jr., Walter A. Tobin, Reginald L. Vaughn, Susan Dukes Webber, Kathryn J. Williamson, Michael A. Wolfe, Christopher Worley

Orangeburg-Calhoun Technical College Foundation, Inc. Board Members 2015

Dwight W. Frierson, Chairman, Catherine C. Hughes, Vice-Chairman, Faith S. McCurry, Executive Director, John F. Ansley, Herbert W. Bradley, Jr., Martha R. Burleson, Angela Burroughs, Karen Crenshaw, Amy C. Delaney, Gary W. Dietrich, L. Dawes Edwards, John P. Evans, Joseph K. Fairey, IV, Katie D. Hane, Catherine F. Hay, Robert R. Horger, Bob H. Horton, Maryanne Martin, Donna Matthews, Linda McGannon, Trina Murphy, Sherrill R. Newnam, Jacqueline S. Shaw, J. Howard Shirer, Jr., Randolph D. Smoak, Jr., Walter A. Tobin, Susan Dukes Webber, Kathryn J. Williamson, Michael A. Wolfe, Christopher Worley

Orangeburg-Calhoun Technical College Foundation, Inc. Board Members 2016

Catherine C. Hughes, Chairman, L. Dawes Edwards, Vice-Chairman, Faith S. McCurry, Executive Director, John F. Ansley, Herbert W. Bradley, Jr., Martha R. Burleson, Angela Burroughs, Karen Crenshaw, Amy C. Delaney, Gary W. Dietrich, John P. Evans, Joseph K. Fairey, IV, Dwight W. Frierson, Katie D. Hane, Catherine F. Hay, Robert R. Horger, Bob H. Horton, Donna Matthews, Linda McGannon, Trina Murphy, Robert F. Sabalis, Jacqueline S. Shaw, J. Howard Shirer, Jr., Randolph D. Smoak, Jr., Walter A. Tobin, Susan Dukes Webber, Ginny W. Williams, Kathryn J. Williamson, Michael A. Wolfe, Christopher Worley

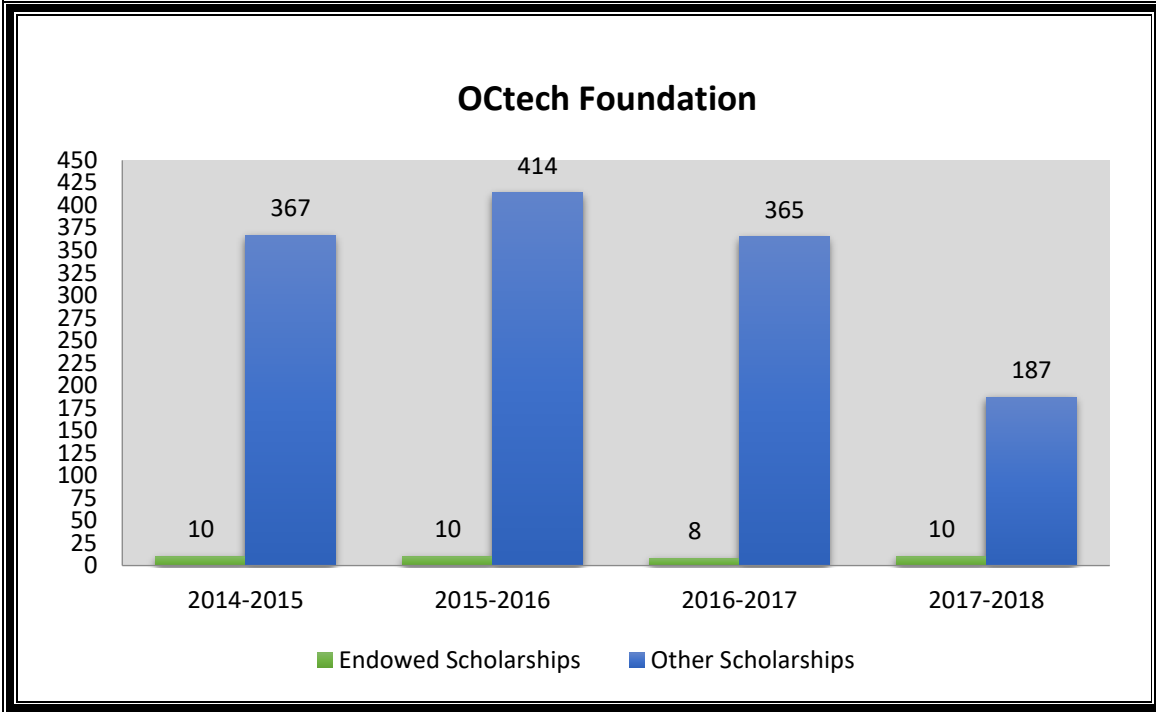
Orangeburg-Calhoun Technical College Foundation, Inc. Board Members 2017

Catherine C. Hughes, Chairman, L. Dawes Edwards, Vice-Chairman, Faith S. McCurry, Executive Director, John F. Ansley, Herbert W. Bradley, Jr., Martha R. Burleson, Karen Crenshaw, Amy C. Delaney, Gary W. Dietrich, John P. Evans, Joseph K. Fairey, IV, Dwight W. Frierson, Catherine F. Hay, Bob H. Horton, Donna Matthews, Linda McGannon, Linda F. Ott, Kevin Ray, Bruce C. Rheney, Robert F. Sabalis, Jacqueline S. Shaw, J. Howard Shirer, Jr., Randolph D. Smoak, Jr. (Emeritus), Walter A. Tobin, Susan Dukes Webber, Virginia W. Williams, Kathryn J. Williamson, Michael A. Wolfe, Christopher Worley

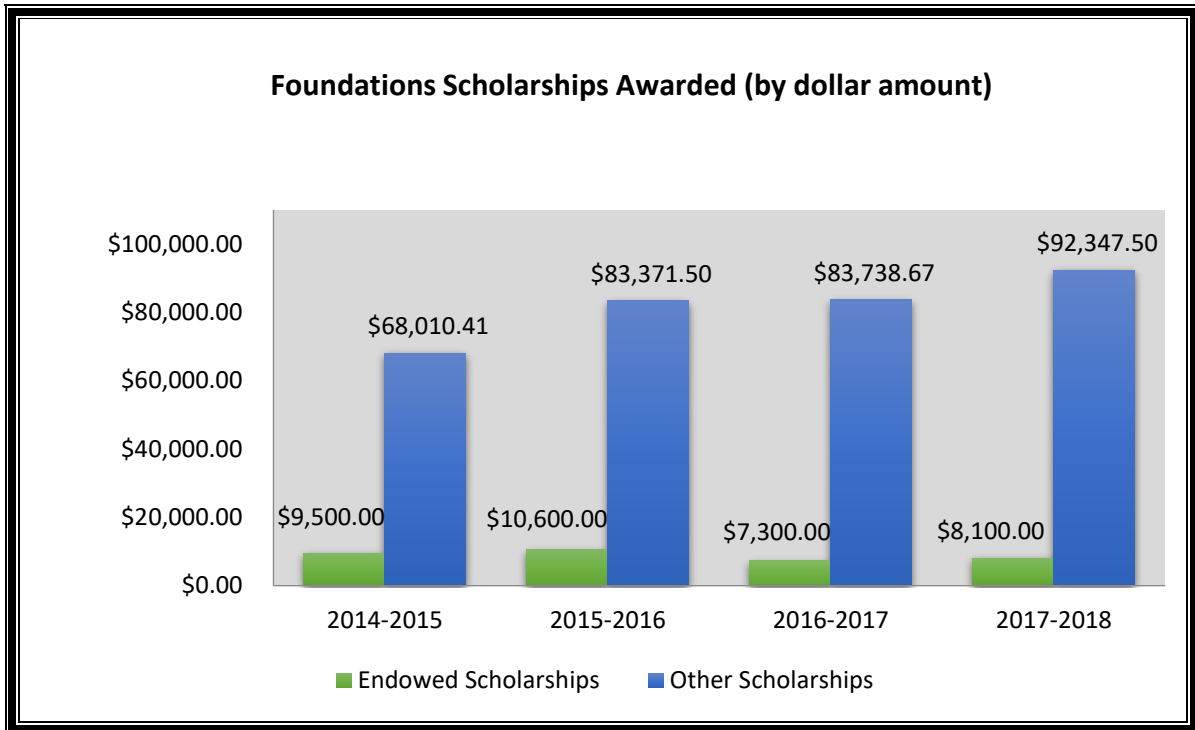
Foundation Scholarships

	2014-15	2015-16	2016-17	2017-18
Endowed Scholarships				
# Awarded	10	10	8	10
Amount	\$9,500.00	\$10,600.00	\$7,300	\$8100
Other Scholarships				
# Awarded	367	414	365	187
Amount	\$68,010.41	\$83,371.50	\$83,738.67	\$92,347.50

SOURCE: OCTech's Dean for Development and Marketing



SOURCE: OCtech's Dean for Development and Marketing



SOURCE: OCtech's Dean for Development and Marketing

CONTINUING EDUCATION

	2013-2014	2014-15	2015-16	2017-18
Contact Hours				
Contact Hours	11,423	14,851	20,286	27,328
Headcount				
Headcount	1,755	1,242	1,152	1,442
National Certifications Awarded				
	209	495	804	348
Students Participating in Internships and Apprenticeships				
	12	15	8	15
Number of Businesses and Industries Served				
	12	22	27	25
Numbers of Clients Trained (not including assessments)				
	695	652	750	373

SOURCE: OCtech's Dean of Corporate Training and Economic Development

Industries/Businesses Served Last Year

1. GKN Aerospace
2. Husqvarna
3. City of Orangeburg
4. DAK Americas
5. Gulbrandsen
6. SCE&G
7. Giant Cement
8. Zeus Industrial Products
9. Devro
10. The Okonite Company
11. SI Group (Albemarle)
12. Santee Cooper
13. South Carolina Department of Employment & Workforce
14. Lower Savannah Council of Governments
15. South Carolina Department of Social Services
16. South Carolina Vocational Rehabilitation Department
17. Lake Marion High School
18. South Carolina Department of Education
19. Monteferro
20. South Carolina Department of Transportation
21. S2 Engineering
22. Whitman Mold
23. Orangeburg County
24. Starbucks
25. Volvo

National Certifications (2017 - 2018)

2017FC

OSHA	16
MSSC	50
NCCER	127
Total	193

2018SC

OSHA	32
MSSC	0
NCCER	79
Total	111

2018SUC

OSHA	9
MSSC	15
NCCER	20
Total	44

National Career Readiness Certificates (2017 – 2018): 674

TABLE 3.4.2-B

Total ACT Career Ready Certificates Earned Through OCtech CTD		
	Computer Based Testing in 2014-15	Computer Based Testing in 2015-16
Bronze Career Ready Certificates Earned	104	51
Silver Career Ready Certificates Earned	212	141
Gold Career Ready Certificates Earned	52	45
Platinum Career Ready Certificates Earned	1	0
Total CRC Certificates	369	237

SOURCE: OCtech's Dean of Corporate Training and Economic Development